



Killarney ES

Media Center Collection Development Plan
2023-24

Mark Wieckowski

Mark Wieckowski
Principal

Brandi Gutch

Brandi Gutch
Certified Educational Media Specialist

Table of Contents

Table of Contents	2
Executive Summary	3
District Strategic Plan 2025	3
School Collection Development Plan	3
School Assessment Analysis	4
Collection Analysis	5
Collection Analysis by Category	6
Notes	6
Representation Analysis	7
Results	7
Strategic Focus	8
Budget and Purchasing Plan	9
Annual Budget 2023-2024	9
Purchasing Plan 2023-2024	9
Year-to-Year Collection Change	11

Executive Summary

District Strategic Plan 2025

Orange County Public Schools is the eighth-largest school district in the United States and the fourth largest in Florida. The district serves more than 206,000 students at 202 schools and is one of the largest employers in Central Florida with more than 25,000 team members.

Vision: To ensure every student has a promising and successful future.

Mission: With the support of families and the community, we create enriching and diverse pathways to lead our students to success.

School Collection Development Plan

Killarney ES serves 303 students enrolled in grades Kindergarten through fifth. The student population's ethnicity is made up of 28% Hispanic and 72% Non-Hispanic students. Additionally, we serve a diverse population made up of 50% White, 41% Black, 0% Native, 3% Asian, 1% Pacific, and 5% Multicultural students.

The administration includes Principal Mark Wieckowski and Assistant Principal Jessica Camara. Killarney ES is proud to offer the many special programs which provide students with opportunities. These include tutoring, math club, lunch lego club, news crew, PreK, morning library, Sunshine State Young Readers Award, sewing club, and safety patrols.

A thorough analysis of the current media center collection at Killarney ES indicates that the average age of the collection is 2007 and the number of books per student is 24. The [American Association for School Libraries](#) has established a criteria for highly effective media centers that includes a ratio of 15-20 books available per student in the collection.

At this time, Killarney ES does not meet the recommended standards for the number of books per student.

The analysis of the collection also revealed the following areas of strengths and concerns:

- The average age of our collection is 2007; therefore, newer non-fiction, fiction, and easy books should be purchased.
- Based on the reading scores, more books should be purchased on lower reading levels.
- The number of Hispanic students has increased, so more books representing this community should be purchased.
- 33% of our collection is representative/diverse titles. 50% of our students are from diverse backgrounds, so more representative titles should be purchased.
- 41% of students are African American and only 4% of the collection represents these students. Purchase more books for this student population.

- Our collection is in need of more popular fiction, graphic novels, and non-fiction books like animals, sports, the supernatural, etc. that meet student interests.
- Continue to increase the number of books in our biography section that meet student interests.
- Weeding will focus on the OCPS Catalog Project expectations.

School Assessment Analysis

The school analysis provides an overview of the school's assessment data for the previous two school years.

Proficiency Data							
Assessment	2021-22	Assessment	2022-23	Assessment	2021-22	Assessment	2022-23
		Star Early Literacy Proficiency	42%				
		Star Reading Proficiency	51%				
						Star Math Proficiency	45%
FSA ELA Grade 3	45%	FAST ELA Proficiency Grade 3	29%	FSA Math Grade 3	38%	FAST Math Proficiency Grade 3	35%
FSA ELA Grade 4	52%	FAST ELA Proficiency Grade 4	63%	FSA Math Grade 4	51%	FAST Math Proficiency Grade 4	63%
FSA ELA Grade 5	39%	FAST ELA Proficiency Grade 5	45%	FSA Math Grade 5	25%	FAST Math Proficiency Grade 5	49%
NGSSS Sci 5 EOC	39%	NGSSS Sci 5 EOC	62%				

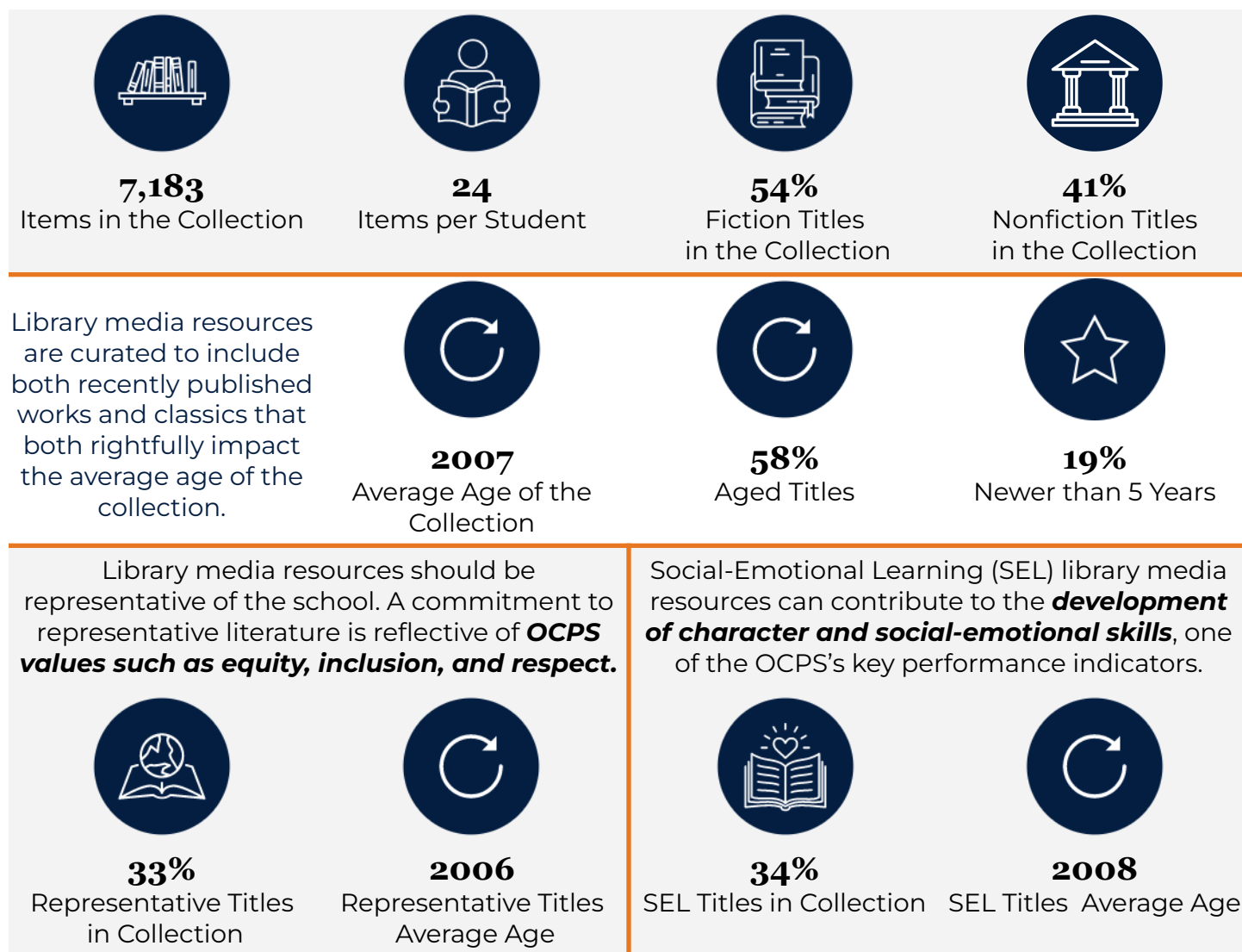
Comparison between 2021-22 and 2022-23 Testing Data

(adapted from <https://www.fldoe.org/accountability/assessments/k-12-student-assessment/results/2023.stml>)

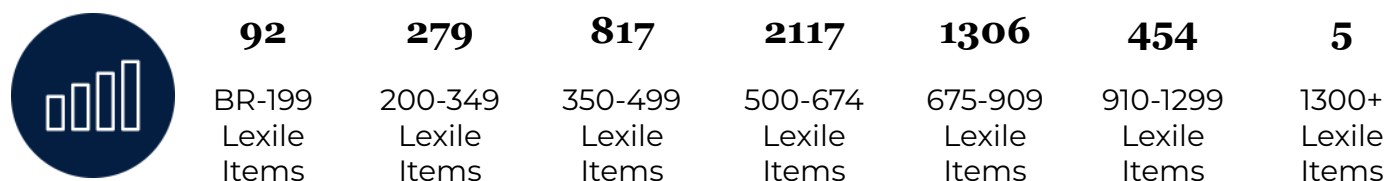
In 2023, the state transitioned from Florida Standards Assessments (FSA) to Florida Assessment of Student Thinking (FAST) for English Language Arts (ELA) and Mathematics. The 2022-23 for FAST and Benchmarks for Excellent Student Thinking (B.E.S.T.) End-of-Course (EOC) assessments are based on **provisional** achievement level cuts that are linked to each assessment's respective 2021-22 reporting scale. Comparisons should not be made between the 2023 data and previous years' data. The implementation of FAST K-2 in the 2022-23 school year was the first administration of statewide assessments for students in grades K-2. These assessments include Star Early Literacy Proficiency, Star Reading Proficiency, and Star Math Proficiency.

Collection Analysis

The collection is developed for and influenced by students, their interests, academic needs and alignment to the curriculum. The data below is a snapshot of the collection based on a Titlewise Analysis from July 2023. Purchasing or weeding after that time is not reflected in this data.



Library media resources are distributed across the ***Lexile reading level ranges*** noted below.



Collection Analysis by Category

The information collected in this section provides a detailed look at the current library collection by classification and genre. The information was gathered from Follett Destiny, the library management system, and Titlewave, the vendor's ordering and analysis tool.

Section	# of Titles	Average Age
Computer Science, Information & General Works	44	2013
Philosophy & Psychology	44	2010
Religion	29	2002
Social Sciences	416	2001
Language	57	2006
Science	764	2009
Technology	409	2008
Arts & Recreation	235	2009
Literature	142	2002
History & Geography	340	2009
Biography	445	2010
Easy	1935	2003
General Fiction	1977	2009
Graphic Novels	293	2018

Notes

- Purchase more Easy books. The collection is at 2003 below the acceptable copyright.
- Weed the religion, language, and social science sections. These non-fiction sections have the oldest copyright in the library collection.
- More low level books are needed in the collection.

Representation Analysis

Enrollment & Demographic Data					
303 2023-24 Student Enrollment as of September 7, 2023	Subgroups		Federal Ethnicity		
	18% ELL	12% ESE	28% Hispanic	72% Non-Hispanic	
Federal Race Category					
50% White	41% Black	0% Native	3% Asian	1% Pacific	5% Multicultural

To deepen focus on strategic collection development, specific sections of the collection were analyzed in detail to determine whether the media center collection reflects and represents various points of view and experiences. The goal is to provide a balanced collection that can be both a mirror, to reflect a reader's experience, and a window, so readers can experience different viewpoints.

Results

Based on the available school data of Killarney ES in comparison to Collection Analysis results, it was found that:

Student Representation	% of Students	Total # of Titles	Total % of Titles	Avg. Age of Titles
Hispanic	28%	56	1%	2012
Black	41%	317	4%	2010
Native	0%	60	1%	2003
Asian	3%	155	2%	2008
Pacific	1%	0	0	0

Strategic Focus

This page lists the priorities for selection and weeding for each school year and includes the action, updates, and outcomes. This is subject to change due to funding and time constraints.

School Year	Strategic Focus
2023-2024	Selection Priorities <ul style="list-style-type: none"> SSYRA and SSYRA Jr. books African American Titles Bilingual Books Low Level Readers Non-fiction planets, biomes, sports, graphic novels Easy/Picture books Resiliency books Biography
	Weeding Priorities <ul style="list-style-type: none"> District Catalog Plan Language, Religion, and Social Sciences Weeded over 4,500 books 21-22 school year
2024-2025	Selection Priorities <ul style="list-style-type: none"> SSYRA and SSYRA Jr. books African American Titles Lower Level readers Biography Non-fiction Countries, unexplained, graphic novels
	Weeding Priorities <ul style="list-style-type: none"> District Catalog Plan Easy Section Weeded over 4,500 books 21-22 school year

Budget and Purchasing Plan

This page outlines the current budget available and specifically lists the priorities for this school year (2023-2024).

Annual Budget 2023-2024

State Funds	
Source	Amount
State (1001111000)	\$1,535.22
Internal Accounts	
Source	Amount
Book Fair Profits	\$500
Scholastic Bucks	\$3500
Library Fines	\$50
Grants or Donations	\$500
TOTAL	\$6,085.22

Purchasing Plan 2023-2024


Approximate Purchasing Plan	
Purpose	Amount
SSYRA and SSYRA Jr.	\$425.53
SSYRA and SSYRA Jr. sequels	\$319.17
Junior Library Guild (graphic novels, picture books, biography)	\$828
Resiliency books	\$500
Non-fiction/Fiction titles	\$3500
TOTAL	\$5,572.70

Year-to-Year Collection Change

The information below represents the year-to-year change within the library media center collection from the 2022-23 to 2023-24 school year. The 2022-23 data is based on a collection analysis from June 2022, while the 2023-24 is based on a collection analysis from July 2023.

Data Reflection

- The age of collection has improved after adding materials and weeding.
- The representative titles stayed the same. We will continue to work on improving this area of the collection.
- The number of books per student increased; as a result, students have more selection choices.

2022-23 Purchased and Weeded Materials			
Materials Added to the Collection 616		Materials Weeded from the Collection 165	Major weeding done in the 21-22 school year.
Category	2022-23	2023-24	
 Items in the Collection	6782	7,183	
 Items per Student	21	24	
 Average Age of Collection	2006	2007	
 Representative Titles in the Collection	33%	33%	






OCPS Killarney ES Collection Development Plan 2023-2024

Final Audit Report

2023-09-18

Created:	2023-09-18
By:	Brandi Gutch (Brandi.Gutch@ocps.net)
Status:	Signed
Transaction ID:	CBJCHBCAABAAO1QjdYfIDFs4NZQaX2dq-odwiVtJi8-x

"OCPS Killarney ES Collection Development Plan 2023-2024" History

-  Document created by Brandi Gutch (Brandi.Gutch@ocps.net)
2023-09-18 - 5:52:23 PM GMT- IP address: 168.184.83.40
-  Document emailed to Mark Wieckowski (mark.wieckowski@ocps.net) for signature
2023-09-18 - 5:53:00 PM GMT
-  Email viewed by Mark Wieckowski (mark.wieckowski@ocps.net)
2023-09-18 - 6:09:14 PM GMT- IP address: 168.184.83.174
-  Document e-signed by Mark Wieckowski (mark.wieckowski@ocps.net)
Signature Date: 2023-09-18 - 6:58:15 PM GMT - Time Source: server- IP address: 168.184.83.174
-  Agreement completed.
2023-09-18 - 6:58:15 PM GMT